



# THE PYLON

## GULF COAST REGION 12



MAR 2006

<http://www.gulfcoastregionscca.org>

### R.E.DITOR NOTES

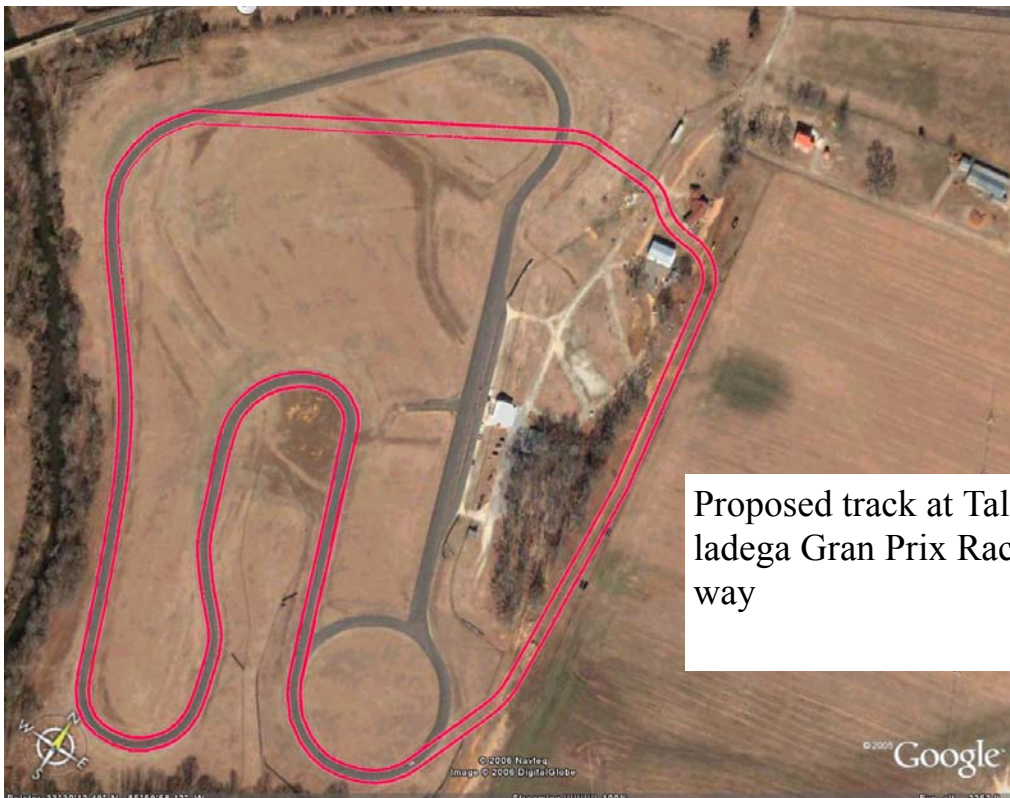
In the recent weeks, I have started getting emails concerning Gulf Coast Region having their events at a distant site, Skelly Field, AL. For those that helped Wiregrass Region with their Track Trials, (Solo I), in the past, you will remember what a long drive it would be. I figured out what it would cost to bring our set up to the field and run an event. First off, we would have to get approval for an overnight stay in order to set up a course properly, the one way mileage from my house is 147. It is a 3 hour trip at its best and getting about 8 miles to the gallon of gas, figure on \$ 45.00. To be honest about it, neither Topper nor I would be interested in taking on such a challenge. If anyone else would like to volunteer

to take over the Solo II program and fully administer it, including the sanction process, getting the equipment to the site, setting up and running the event and getting the results to the editor, PLEASE offer your services by attending the meeting on the 23rd of March.

So far, no news on the use of any of the Whiting OLF's, (not Whiting Field.) The feedback I got on the subject was "the political process takes some time" We are still hoping to be able to get some venue close to Pensacola which is more or less the center of our member population.

Come to the meeting, (that's twice I've said that) lets discuss what we are going to do.!

Walt W. R.E.



Proposed track at Talladega Gran Prix Raceway

## TREASURER'S REPORT

Beginning Bal.	1/31/06	\$ 4580.23
<b>INCOME:</b>		
Member Dues	105.00	
Interest Earned		105.00
<b>EXPENSES:</b>		
Pylon	22.81	
		22.81
Ending Bal.	2/28/06	Ending Bal. \$ 4662.42

## SOLO II 2006

### SCHEDULE TO BE DETERMINED

**New Site must still be found:**

**Tech & Registration 8:00 am  
Registration closes at 9:00 am**

<b>SCCA Members</b>	<b>\$ 10.00</b>
<b>Active/Retired Military</b>	<b>\$ 15.00</b>
<b>Non-SCCA Members</b>	<b>\$ 20.00</b>

**PLEASE - NO PETS - Also Children MUST  
be under adult supervision at ALL TIMES !!**

**PLEASE HELP FIND A SITE**

### COMING EVENTS

Mar 23 2006	Gulf Coast Region Meeting at <b>Fire Mountain 9006 Pensacola Blvd (Hwy 29) 7 PM</b> dinner, <b>8 PM</b> mtg .
Apr 8-9 2006	Track Trials, Carolina Motorsport Park, Kershaw, SC. See Central Carolinas web page for info.
Apr 9 2006	Wiregrass Region Solo II, Hunt Stage Fld, Ozark, Al
Apr 15 2006	PDX at Barber, Birmingham AL. See Alabama Region web site for info.
Apr 20 2006	Gulf Coast Region Meeting at <b>Fire Mountain 9006 Pensacola Blvd (Hwy 29) 7 PM</b> dinner, <b>8 PM</b> mtg .
Apr 22-23 2006	Track Trial School and event, Talladega Gran Prix track, Talladega, AL. See Alabama Region web page.
Apr 29-30 2006	Solo II divisional, Gwinnet County Fairgrounds, Atlanta, GA. See Atlanta Region web page.

*Editor: Walt Wurzbach  
(251)945-6150* **THE PYLON** is the official publication of the **Gulf Coast Region - Sports Car Club of America**. Opinions expressed herein are those of the editors and authors who have submitted articles. The editor reserves the right to edit all material for clarity and space. Articles must be submitted prior to the 10th of the month to be included in the current month's issue.

### CLUB WHEELS:

<b>Regional Executive:</b> Walt O. Wurzbach 13575 Leatherbury Rd. Loxley, AL 36551 (251)-945-6150	<b>Asst. Regional Exec:</b> Topper Jones 10124 Willis Rd. Foley, AL 36535 (251)943-7630	<b>Secretary:</b> Roberta Spoh P.O. Box 1203 Foley, AL 36536 (251)943-4114	<b>Treasurer:</b> See R.E. <b>Editor</b> Walt Wurzbach wurzbach@gulftel.com	<b>Area III Director:</b> K.P. Jones 3355 Oakdale Pl. The Villages, FL 32162 (352)-751-5049
<b>Director-at-large:</b> Alan Givens 3217 Copper Ridge Cir Cantonment, FL 32533 (850)982-0394	<b>Director-at-large:</b> Richard Felis 954 Palmetto St Mobile, AL 36604 (251)-432-0025	<b>Solo II Chairman</b> Topper Jones 10124 Willis Rd. Foley, AL 36535 (251)943-7630	<b>Solo II Co-Chairman</b> Richard Felis 954 Palmetto St Mobile, AL 36604 (251)-432-0025	<b>Area XII Director:</b> Kaye Fairer 145 Fenton Place Danville, VA 24541 (434)-793-4235

## GULF COAST REGION SPORTS CAR CLUB OF AMERICA

Minutes of February 23, 2006

The meeting was called to order by R.E. Walt Wurzbach. There were 16 people attending, including four visitors. They were welcomed with the members describing their vehicles and events. Walt reported the treasury has about \$4600. He has just signed a new contract with the computer guru. There will be \$150 coming in from memberships. Since the January meeting was not a business meeting, there were no Minutes for The Pylon.

Walt reported that he had not attended the National Convention but noted there has been a lot of controversy which he briefly outlined. Our Gulf Coast Region membership is declining; down to 82 from 130 last year.

**SOLO 2:** Discussed search for a site situation. Gary Crook emailed possible site at Auto Auction (Burgess & 29). Allen Givens has checked it out; there are already plans for the vacated land. Escambia County Sheriff has a place to run but they are not giving out any information. Walt has been working with a very motivated Navy commander on the possibility of the use of Wolf or Holly Navarre Fields. Re Wolf Field: site is "gorgeous" but getting across the area to it is really bad. Another possibility: Silverhill Field which has just been resurfaced. It would be perfect. Noted Paul Neal will be competing at a divisional this weekend in Georgia (just north of Valdosta). Answered query re TriRegion series: "it never got off the ground." Informed visitors that they can access SCCA Rules/Regulations online.

Walt presented annual awards for Time Trials (formerly Solo I) to the following :

- 1st Place DSR - Richard Felis
- 1st Place CFC - Maryann Jones
- 2nd Place FC - Topper Jones

Discussion about upcoming PDX event April 15. There will be three classes: Novice. Intermediate. Advanced. It will be multicar with limited passing for entry fee of \$250. Noted that non-members can enter at Barber Motorsports. In response to several comments from previous entrants. Walt advised that they've made a lot of changes in attitude/policy from their initial hard-line. Noted that Chin Motorsports is another venue. although more expensive.

**OLD BUSINESS:** Walt asked for feedback on format for meetings, i.e.. social or business or combination. Consensus was to keep business meetings just that but to have a couple more social meetings such as in January. All agreed it had been very successful; thanks Molly & Gerald!! Tentative plans for social in June; possibly at Walts.

There being no further business, the meeting adjourned and discussion centered on general information sharing. Topper offered to sell his Continental for \$9000 (including extras). Call him!

Attending: Walt Wurzbach. Bob Turman. Raymond Worden, Bob Lembcke, Marc Cobb. Ron Davis, Colin Harraway. Jon Pech, Topper Jones, Allen Givens, Richard Felis, David Bates, Roberta Speh, Anthony & Diane McIntire, Paul Neal.

Submitted by:

*Roberta Speh*

Roberta Speh. Secretary

Dear Friend of Auburn Engineering:

Help us make history! The state of Alabama hosts its first Society of Automotive Engineers competition April 13-15 with Mini Baja East 2006, and volunteers are vital.

Founded in 1976, Mini Baja is an annual SAE student design competition to design, build and race a prototype of an off-road sporting vehicle. It consists of East, West, and Midwest regional events which last year hosted teams from 273 North American colleges.

Competition consists of a day of judging for engineering design and manufacturing cost, a day of short events demonstrating power and maneuverability of the prototype, and a day of endurance racing with the whole field running wheel-to-wheel. This year at East, design, cost, and safety judging will take place on the Auburn campus, and the dynamic events will take place on a specially-built course in nearby Opelika.

Creating this prototype teaches the student teams about project management, teamwork, industrial relations, design analysis, fabrication technology, and a whole lot of real-world engineering. And – racing it is a lot of fun! It takes a lot of people to make Mini Baja happen – design engineers, autocrossers, trail riders – anyone who supports the young minds and future engineers of our country.

To pull off an engineering design and motorsports competition for the 67 registered teams – upwards of 700 highly motivated college students – requires about 200 volunteers. You are invited to join in the festivities and help make the experience fun, safe, and educational for everyone involved.

Examples of specific needs: engineers, especially with automotive or off-highway design experience; motorsports track staff to keep the races running smoothly and professionally; ATVs and recovery crews for downed vehicles on the backwoods race course. But overall – we simply need folks who want to take part and help out. Training and information will be provided ...all you need to bring is enthusiasm and a sense of humor!

To learn more about the event, please visit the competition home page at <http://east.minibaja.org>; the SAE Web site at <http://students.sae.org/competitions/minibaja/east>; or individual team Web sites such as [www.eng.auburn.edu/organizations/SAE/AUMB](http://www.eng.auburn.edu/organizations/SAE/AUMB) and [www.eng.auburn.edu/organizations/SAE/ALTMB](http://www.eng.auburn.edu/organizations/SAE/ALTMB).

Please sign up on our volunteer Web site – <http://east.minibaja.org/vol/signup.asp> – and the organizing committee will contact you regarding schedule and responsibilities.

SAE Mini Baja is a career-defining experience for students. Volunteering your time and effort creates a competition that inspires them to give their very best. Please join us – we look forward to seeing you there.

Sincerely,  
Peter Jones, organizer  
SAE Mini Baja East 2006

Barbara-

Here is the volunteer solicitation letter I told you about, and some other info for the SAE Mini Baja East Competition, 13-15 April in Auburn, Alabama:

Mini Baja is an engineering student design/build/race competition that looks a lot like rally racing. My thought was that if we strengthen the connection between SCCA and Mini Baja, it would bring more professionalism to Mini Baja, and connect the various forms of SCCA racing to a pipeline of budding enthusiasts. As a first step, I hope that some SCCA folks might be interested in coming down to Auburn to help marshal the course and run the events. Please let me know if you have any questions. I've provided some background material below.

-Peter Jones  
Faculty Advisor, War Eagle Motorsports  
Organizer, Mini Baja East 2006  
334.844.3368  
pjones@eng.auburn.edu

Mini Baja:

400 pound, 10 hp single seaters with about 10 in. of suspension travel that college teams design and build from scratch, fresh every year. The competition travels around, and this year the East regional is in Auburn. The teams compete in design judging, short dynamic events, and a wheel-to-wheel Endurance Race that we expect to last about 6 hours.

See examples on individual team Web sites such as [www.eng.auburn.edu/organizations/SAE/AUMB](http://www.eng.auburn.edu/organizations/SAE/AUMB) and [www.eng.auburn.edu/organizations/SAE/ALTMB](http://www.eng.auburn.edu/organizations/SAE/ALTMB).

Mini Baja East 2006:

see the competition home page at <http://east.minibaja.org>; the SAE Web site at <http://students.sae.org/competitions/minibaja/east>

Scheduling:

Baja Competitions are three day affairs (Thursday, Friday, Saturday, 13-15 April). Volunteers are needed for each day. Each day is unique, and so volunteers can attend for any one or two days without breaking continuity.

The first day is static - tech inspection and design judging, plus brake and engine check. I would love to have some safety and setup folks get their noses into this. Events will be open from 8 a.m. to 5 p.m.

The second day is short events - five different events running one car at a time for a run time of 1 to 2 minutes. Events are: Acceleration; Log Pull; Water Maneuverability; Land Maneu-

verability; and Suspension & Traction. Events will run from 8 a.m. to 5 p.m. We need people who are familiar with the control zone concept - about 5 people per Event.

The third day is an Endurance Race, all 67 cars running together over a 1.84 mile rough terrain course. Race will go from 9 a.m. to about 3 p.m., though we need to get volunteers in much earlier than that. What we're looking for is corner workers more than anything else. People with rally experience to control sections of track. Get the damaged cars off and keep the site safe without shutting the race down. Handle a motorsports competition.

Volunteers' breakfast and lunch will be taken care of, plus dinner on Friday (pizza) and Saturday (awards banquet). Teeshirt for volunteers.

As we discussed, we could really use any equipment SCCA might lend us (radios, cones, flags, and ESPECIALLY timing systems). We think we have fire & rescue worked out (ATV's, access road network, experienced staff, local ambulance service, helo pad), but of course are always willing to listen to suggestions.

This email is being forwarded to you to offer an opportunity that coincides with our desire to attract and get the younger generations involved with SCCA.

SAE Mini Baja is a collegiate competition that works along the same lines as Formula SAE (FSAE teams usually participate in SCCA Solo events to get seat time) where students build from scratch a vehicle in which they will present at the SAE competition event. The event has both static (juried) competition as well as dynamic (vehicle performance) competition: in SCCA language a circuit rally, on dirt wheel to wheel.

Mini Baja has three competition events each year, one each in the East, Midwest and West areas of the country. Auburn University in Alabama is hosting the East competition for 2006. However colleges and universities from up and down the eastern seaboard as well as the rest of the country will be attending. Some schools attend all three competitions.

The students are required to be the drivers of their vehicles so getting seat time and experience at this type of event lends itself very easily to getting them involved as participants at SCCA events, especially Rally events. Attending and volunteering at the Mini Baja East event would be a wonderful way to meet and help the students, faculty advisors and invite them to participate in SCCA.

Mini Baja organizers have also, over the last few years, come to realize that they are not as fully equipped as they'd like to or need to be in the area of course workers for the event and they are asking for our help. We are the best trained and now everyone is asking for that help.

At left is a message from Dr. Jones of Auburn request help in a number of areas. He has also attached a volunteer document talking more about the event and the event's needs.

Club, Solo and Rally workers are welcome to participate and help the group.

There are two things that put us at a disadvantage for the event:

1. Alabama Region has a PDX event at Barber the same weekend. So if you or some of your members are not attending the PDX (SCCA family first) then think of Mini Baja for that weekend.
2. The event is in Opelika, AL which is a distance for many of you however the event where they need our help most is on Saturday.

That being said, the benefits may out weight the disadvantages in that Mini Baja:

\*is an event worth learning more about and it is great to see and get to know the students  
\*travels to different locations so it may be in your area at some time in the future \*is an opportunity to network with and invite the students to be a part of SCCA

Please look through the information and the web links Dr. Jones is providing to learn more about this group. Please talk with your Region leadership and members to see if there is interest in getting involved with this.

Please call or email if you have any questions or need any additional information; I will be happy to help out. Feel free to contact Dr. Jones directly as well, especially if you'd like to be involved.

Please give us feedback on comments you may have and if you are planning on attending the event. This is another activity that we'd like to gather Region involvement information on to roll it into the Region Best Practices file.

Thanks very much for your consideration! I hope you will say Yes and let us know how it went.

Regards,

Barb

Barbara Lundquist, CVA

Director

SCCA Region Development

SCCA Foundation

800-770-2055 ext 357

785-862-7157 direct

785-608-9289 cellular

blundquist@scca.com

www.scca.com

## MEMBER NEWS

Thought you might want to mention this in next newsletter.....

I went to the Pensacola's Quilters' Guild's show last weekend. Our secretary, Roberta, is a member and had 4 pieces on exhibit. Two got awards. In mixed, machine quilted, medium size, her "Underground Wonders II", got an honorable mention. In the miniature quilt division, she scored a second with "Beach Strings". She also had a hand in the Naval Aviation quilt which is to be given to the Naval Aviation Museum some time this year (has the Mighty O as a center piece...)

Anyway, thought others might like to know that one of our members has some real talent...

Bob Lembcke

## Note from National

### **Memo to participants:**

RallyCross and RoadRally boards will be using the SCCA website discussion forum to post new information regarding RoadRally and RallyCross. Please go to the site to get new and updated information in addition to Fastrack and Inside line.

## THE GOOD TIMES AT BRONSON FIELD



## **NEED SOME FEEDBACK !**

Received the following email from Cole Milstead, what I need help on is the questions he posed in the third paragraph. Do we as a Region want to take over the traditional Memorial Day Event, Track Trial, from Wiregrass Region ? In order to do so, we would have to get approval from Ft. Rucker and do a bunch of traveling in order to get everything done in the short time left. I personally do not think it will work out, since my understanding was that the only way Wiregrass was approved for these events was by being a "Base Club" Anyway, please respond to me with your thoughts and ideas. The second part concerns us using Skelly for our Solo II's. Again it would be a hardship for us to travel that far and have a course set up early enough to get the maximum number of runs, not to mention the cost involved for gas, etc. It would also have to be approved by Ft. Rucker. Thoughts ?

Walt

### EMAIL FROM COLE MILSTEAD, R.E. WIREGRASS REGION

Lots of folks from other regions helped again. We had some incidents with the timing equipment. A F125 go cart ran over the cords and yanked the timer off the table. Someone had to take the back off the timer and plug the new cable directly into the wiring that was now loose inside the box. But it worked perfectly. Then another driver spun near the finish and hit one of the white timing boxes and sent it flying but did not smash it...and it worked too!

So I take it we will still have a meeting Thursday? We had 52 cars, yesterday, and I can't envision having low numbers again anytime soon. Guess we should start spending some club money to make these events run smoother with that many cars.

I guess we also need to talk about the Solo I. I have not done anything on that yet, and frankly have no clue what to do. I wonder if Walt's guys would be interested in taking over the Solo I and possibly using Skelly for Solo II events? Nobody I've spoken too, (Ed/Craig) is real keen on continuing to unplug all those lights every year on Memorial Day weekend. I would imagine, Skelly is no more than 2 hours from Pensacola, and an hour closer to Eglin folks. Solo II courses could be set up there well away from the lights.

Cole

# CLASSIFIEDS

\*\*\*\*\*



This car is for sale. See Topper for details.

\*\*\*\*\*

**Overloaded with projects, NEED TO SELL SOME !** I have two Nissan 300zx 2+2 cars. One is silver with a good body and interior but a bad motor and automatic transmission. The second one is wrecked but has a good motor and standard 5 speed transmission. This was supposed to be a project to put the good motor and 5 speed into the silver car but has just not happened. Neither car is driveable at this time, however they can be moved. Please make me an offer. Contact: Walt Wurzbach, wurzbach@gulftel.com or (251) 945-6150 (3/06)

\*\*\*\*\*

**Advertisers – Please let me know if you still want to keep these ads in the newsletter. Six months maximum, and several are due to be dropped, unless I hear from you !**

## 2006 COOL SHIRT SEDiv TT Schedule

March 4-5	Gainesville	Central FL Region
April 8-9	CMP-Kershaw, SC	Central Carolinas Region
April 22-23	TGPR (*TT event & School*)	Alabama Region / Tenn Valley Region
May 27-28	Skelly Field	Wiregrass Region
August 5-6	Billridge Hillclimb	Central Carolinas Region
Sept 30- Oct 1	Crow Mt Hillclimb	Tenn Valley Region
Oct 14-15	Nashville Super Speedway	Chattanooga Region
Oct 28-29	VIR	North Carolina Region
Nov 4-5	Roebing Road / Savannah	Buccaneer Region

**Most Regions will have entry forms posted on their web sites!**



# Membership Application

## Dear Prospective SCCA Member:

To apply for membership in the Sports Car Club of America, the world's largest member participation automotive organization, please complete the form below in full and return, with payment, to your region or the SCCA Membership Department, P.O. Box 19400, Topeka, KS 66619-0400.

### PLEASE PRINT OR TYPE

Name \_\_\_\_\_ Birthdate \_\_\_\_ / \_\_\_\_ / \_\_\_\_

Address \_\_\_\_\_ Telephone (\_\_\_\_) \_\_\_\_\_

City \_\_\_\_\_ State \_\_\_\_\_ Zip \_\_\_\_\_ County \_\_\_\_\_

E-mail \_\_\_\_\_

Single  Married Spouse's Name \_\_\_\_\_ Birthdate \_\_\_\_ / \_\_\_\_ / \_\_\_\_

Spouse Member Number If Current Member \_\_\_\_\_

### IF APPLYING FOR FAMILY MEMBERSHIP (husband/wife and children), list names and ages of children under age 21:

03 Name \_\_\_\_\_ Birthdate \_\_\_\_ / \_\_\_\_ / \_\_\_\_

04 Name \_\_\_\_\_ Birthdate \_\_\_\_ / \_\_\_\_ / \_\_\_\_

05 Name \_\_\_\_\_ Birthdate \_\_\_\_ / \_\_\_\_ / \_\_\_\_

06 Name \_\_\_\_\_ Birthdate \_\_\_\_ / \_\_\_\_ / \_\_\_\_

Have you been an SCCA member before?  No  Yes: Year \_\_\_\_\_ Previous Member No. \_\_\_\_\_

Please send me a Crew License (check box)

### PRIMARY INTEREST(S) IN SCCA:

Please indicate the area(s) of SCCA in which you plan to participate, or which interest you most. Your response will be used to allocate your national dues to the areas you indicate. Thank you.

Club Racing  Pro Racing  ProRally  RoadRally  Solo

	Annual National Dues		Annual Regional Dues	=	Total
01	<input type="checkbox"/> Regular Member \$60.00	+	Regular Member \$15.00	=	\$ 75.00
03	<input type="checkbox"/> Spouse Member \$20.00	+	Spouse Member \$ 5.00	=	\$ 25.00
10	<input type="checkbox"/> Family Membership \$95.00	+	Family Membership \$20.00	=	\$115.00
	<input type="checkbox"/> First Gear \$ _____	+	First Gear (Reg. dues) \$ _____	=	\$ 45.00
	(you must be 21 and under)				

#### National Office Use Only

C- \_\_\_\_\_ \$ \_\_\_\_\_  
 C- \_\_\_\_\_ \$ \_\_\_\_\_  
 C- \_\_\_\_\_ \$ \_\_\_\_\_

Source

Enclosed is my check or money order for \$ \_\_\_\_\_ U.S. DO NOT SEND CASH.

VISA  MC No. \_\_\_\_\_ Expiration Date \_\_\_\_\_

I hereby apply for membership in the Sports Car Club of America, Inc. and its GULF COAST / # 12  
 Region and agree to abide by the bylaws. (Region Name/Number)

Applicant's Signature \_\_\_\_\_ Date \_\_\_\_\_

*Dues include payment for subscription to SportsCar (\$24 value)  
 (Dues are not deductible as charitable contributions)*